



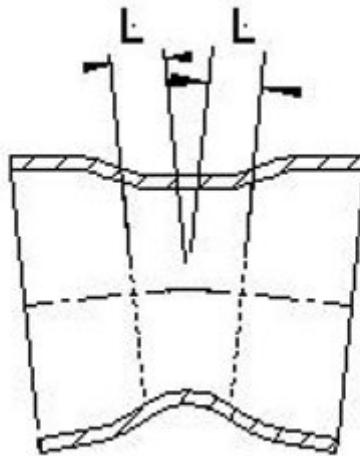
AL SAAD CO

ENGINEERING CONSULTING

Ductile Iron pipe socket fittings

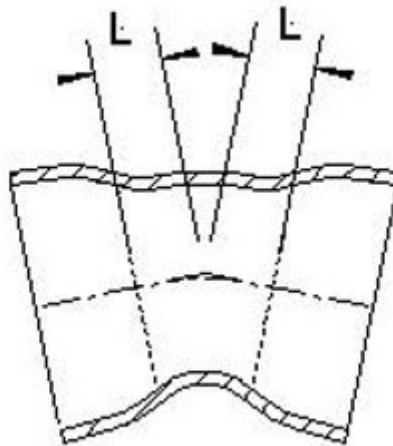
11¼° Double Socket Bend (Class K12)

Nominal Bore mm	Dimensions	Weight	
	Series B L mm	Epoxy Kgs.	Lined Kgs.
80	30	5	6
100	30	7	8
125	35	10	11
150	40	11	13
200	45	17	19
250	55	23	26
300	55	37	40
350	60	41	44
400	65	54	58
450	70	76	80
500	75	84	90
600	85	121	127
700	95	261	271
800	110	265	275
900	120	390	402
1000	130	485	500
1200	150	758	773
1400	130	1033	1053
1600	140	1382	1407



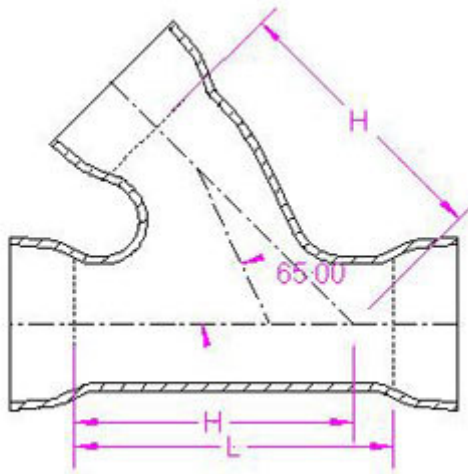
22½° Double Socket Bend (Class K12)

Nominal Bore	Dimensions	Weight	
	Series B	Epoxy	Lined
mm	L mm	Kgs.	Kgs.
80	40	5	6
100	50	7	8
125	55	10	11
150	60	12	13
200	70	19	21
250	80	26	28
300	90	42	44
350	100	48	50
400	110	63	66
450	120	78	82
500	130	99	103
600	150	142	147
700	175	265	271
800	195	337	343
900	220	468	478
1000	240	588	598
1200	260	919	934
1400	260	1243	1263
1600	280	1663	1688



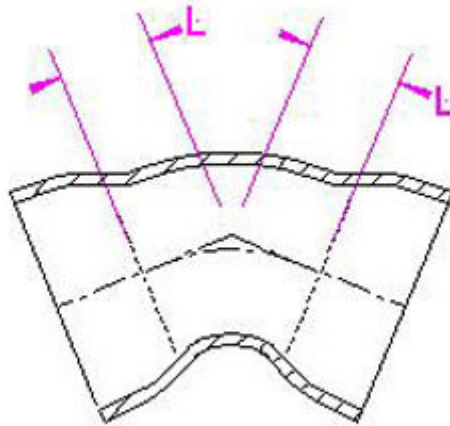
45° All Socket Angle Branch (Class K14)

Nominal Bore mm	Dimensions L mm H mm		Weight	
			Epoxy Kgs.	Lined Kgs.
80	300	250	18	20
100	300	250	22	24
150	400	350	40	44
200	500	450	56	64
250	550	500	83	92
300	570	500	110	120



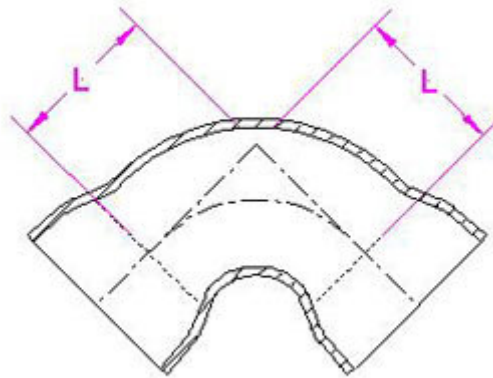
45° Double Socket Bend (Class K12)

Nominal Bore mm	Dimensions	Weight	
	Series B L mm	Epoxy Kgs.	Lined Kgs.
80	50	7	8
100	60	8	9
125	65	10	11
150	70	14	15
200	80	20	22
250	135	31	33
300	155	49	51
350	175	58	61
400	195	80	83
450	220	99	103
500	240	128	132
600	285	186	191
700	330	331	336
800	370	428	434
900	415	604	614
1000	460	770	780
1200	550	1212	1227
1400	515	1565	1585
1600	565	2100	2130



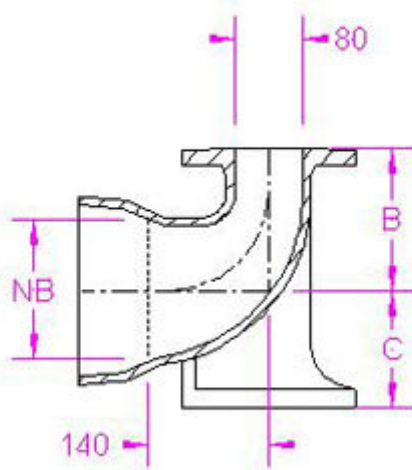
90° Double Socket Bend (Class K12)

Nominal Bore	Dimensions	Weight	
	Series B	Epoxy	Lined
mm	L mm	Kgs.	Kgs.
80	85	6	7
100	100	9	10
125	115	12	14
150	130	15	17
200	160	23	27
250	240	41	44
300	280	60	64
350	370	79	83
400	420	108	113
450	470	138	143
500	520	177	183
600	620	285	293
700	720	435	455
800	820	640	650
900	920	818	830
1000	1020	1093	1117
1200	1220	1746	1766
1400	1420	2765	2790
1600	1620	3979	4409



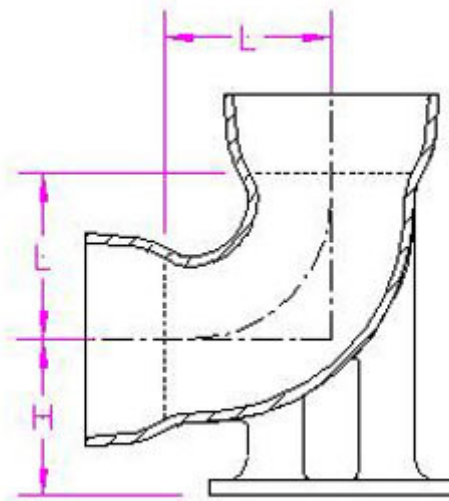
90° Hydrant Duckfoot Bend (Class K 12)

Nominal Bore		Dimensions		Weight	
Socket	Flange			Epoxy	Lined
mm	mm	B mm	C mm	Kgs.	Kgs.
80	80	165	95	13	15
100	80	165	105	18	20
150	80	165	135	25	27



90° Socketed Duckfoot Bend (Class K12)

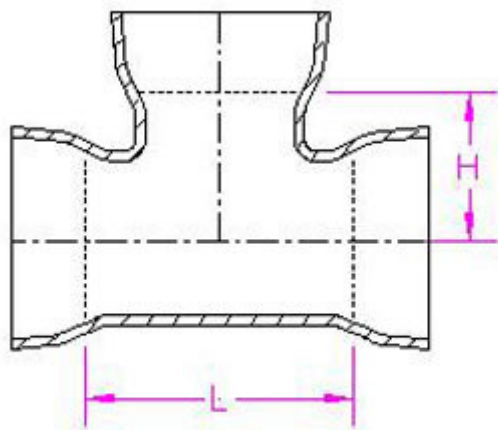
Nominal Bore	Dimensions		Weight	
			Epoxy	Lined
mm	L mm	H mm	Kgs.	kgs.
80	100	110	13	14
100	100	110	13	14
150	170	160	29	31
200	220	190	45	47
250	270	225	69	73
300	320	255	101	107



All Socket Tee (Class K12)

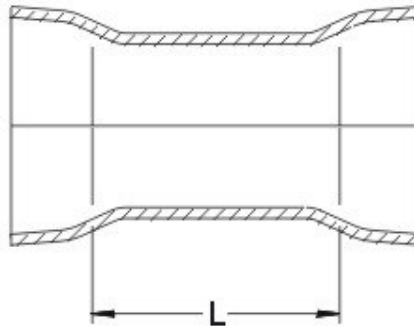
Nominal Bore		Dimensions		Weight	
Body	Branch			Epoxy	Lined
mm	mm	L mm	H mm	Kgs.	Kgs.
80	80	175	85	11	12
100	80	165	90	13	14
100	100	195	100	14	15
150	80	180	120	18	16
150	100	200	125	20	21
150	150	260	130	27	28
200	80	180	145	26	27
200	100	200	150	27	28
200	150	260	155	32	34
200	200	320	160	38	40
250	80	185	185	36	38
250	100	205	190	36	38
250	150	265	190	45	47
250	200	320	190	48	51
250	250	380	190	55	58
300	80	220	235	48	50
300	100	210	220	49	51
300	150	265	220	60	63
300	200	325	220	62	64
300	250	380	220	77	81
300	300	440	220	82	86
350	80	225	260	59	62
350	100	225	260	60	64
350	150	340	265	71	75
350	350	515	270	108	112
400	100	225	290	75	80
400	150	340	290	88	93
400	200	340	290	95	100
400	250	575	295	124	129
400	300	575	295	131	137
400	400	575	300	139	145
450	80	230	315	87	92
450	100	230	315	90	95
450	150	345	320	106	112
450	200	345	320	109	115
450	250	635	320	156	162
450	300	635	325	164	171
450	350	635	310	166	173
450	400	635	315	174	181
450	450	635	330	173	183
500	80	230	345	110	117
500	100	230	345	114	121
500	150	350	345	126	134
500	200	350	345	129	137

500	250	580	350	172	181
500	300	580	350	172	182
500	350	580	340	186	196
500	400	580	340	190	200
500	450	695	345	216	226
500	500	695	350	224	234
600	80	355	400	161	171
600	100	355	400	166	176
600	150	355	400	168	178
600	300	585	405	226	238
600	450	820	400	310	322
600	600	820	410	330	342
700	150	360	410	289	299
700	200	360	415	291	301
700	400	580	430	367	379
700	450	640	435	388	400
700	700	900	450	549	564
800	150	360	465	350	365
800	200	360	470	351	366
800	400	585	480	444	459
800	450	645	490	470	485
800	800	1020	505	717	737
900	150	370	515	457	472
900	200	370	520	458	473
900	400	590	530	569	579
900	450	650	535	587	607
900	900	1145	560	968	988
1000	200	370	570	554	574
1000	400	595	580	678	698
1000	450	655	590	711	731
1000	600	1265	600	1040	1063
1000	1000	1265	625	1244	1264
1200	200	375	675	827	847
1200	400	600	685	989	1009
1200	450	660	690	1027	1052
1200	600	830	700	1157	1182
1200	1200	1475	740	1951	1976
1400	600	930	695	1853	1883
1400	800	930	700	2099	2129
1400	1000	1585	795	2389	2419
1600	600	930	690	2385	2415
1600	800	930	705	2688	2718
1600	1000	1050	740	3034	3054
1600	1200	1235	750	3385	3420
1600	1400	1235	750	3763	3792
1600	1600	1695	850	4131	4171



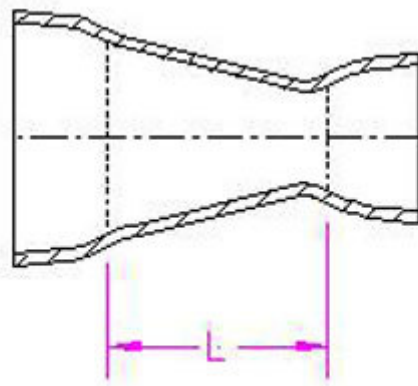
Double Socket Collar (Class K12)

Nominal Bore mm	Dimensions L mm	Weight	
		Epoxy Kgs.	Lined Kgs.
80	160	8	9
100	160	10	11
150	165	15	16
200	170	25	26
250	175	31	33
300	180	43	45
350	185	52	55
400	190	64	67
450	195	81	85
500	200	96	100
600	210	126	131
700	220	150	155
800	230	264	270
900	240	337	344
1000	250	371	378
1200	270	409	419
1400	340	470	484
1600	360	590	610



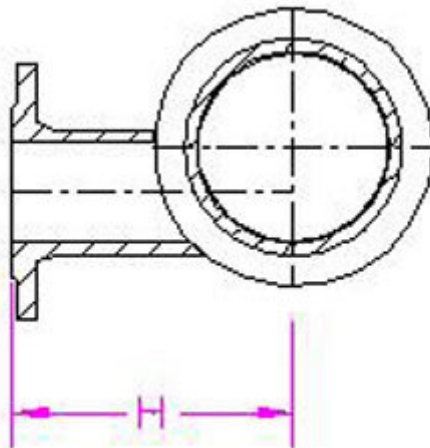
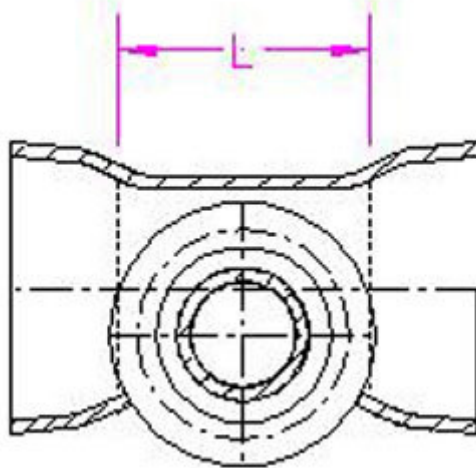
Double Socket Tapers (Class K12)

Tapering		Dimensions	Weight	
From	To		Epoxy	Lined
mm	mm	L mm	Kgs.	Kgs.
100	80	85	7	8
150	80	190	10	11
150	100	150	10	11
200	100	250	15	17
200	150	145	16	17
250	100	250	21	23
250	150	250	23	25
250	200	150	22	24
300	150	370	31	34
300	200	250	33	35
300	250	150	34	36
350	200	370	46	50
350	250	260	43	47
350	300	160	42	45
400	200	360	57	62
400	250	360	60	65
400	300	260	63	67
400	350	160	52	56
450	250	260	77	83
450	300	260	79	85
450	350	260	79	85
450	400	160	69	73
500	250	360	97	105
500	300	360	95	103
500	350	360	89	97
500	400	260	84	92
500	450	160	78	84
600	300	460	145	155
600	350	460	148	148
600	400	460	132	142
600	450	360	124	134
600	500	260	116	126
700	500	480	215	227
700	600	280	193	203
800	600	480	270	284
800	700	280	277	289
900	700	480	379	401
900	800	280	355	365
1000	800	480	475	487
1000	900	280	446	458
1200	1000	480	716	731
1200	1100	360	693	709
1400	1200	360	949	964
1600	1400	360	1288	1308



Flange on Double Socket Level Invert Tee (Class K14)

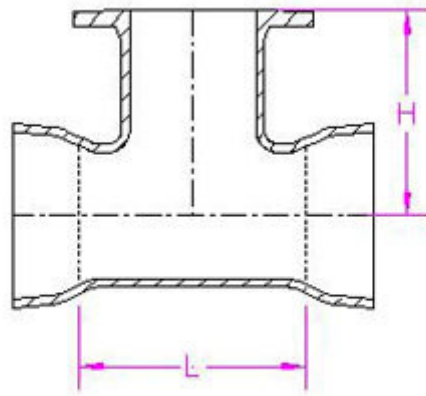
Nominal Bore		Dimensions		Weight	
Body	Branch			Epoxy	Lined
mm	mm	L mm	H mm	Kgs.	Kgs.
150	80	190	220	24	27
200	80	190	250	33	36
250	80	220	275	45	48
250	100	220	275	46	49
300	80	220	305	50	53
300	100	220	305	53	56
350	100	225	340	61	64
400	100	225	365	76	80
450	100	230	380	90	95
500	100	230	400	113	106
600	100	355	435	171	180
700	200	360	500	300	313
800	200	360	540	364	379



Flange on Double Socket Tee (Class K14)

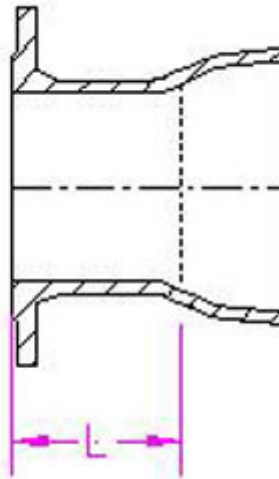
Nominal Bore		Dimensions		Weight	
Body	Branch			Epoxy	Lined
mm	mm	L mm	H mm	Kgs.	Kgs.
80	50	155	155	12	13
80	80	175	165	13	14
100	50	155	165	13	14
100	80	165	170	14	15
100	100	195	180	16	17
125	80	175	185	17	18
125	100	195	195	19	20
125	125	225	200	22	24
150	80	180	200	20	21
150	100	200	205	22	23
150	125	230	215	23	25
150	150	260	220	27	29
200	80	180	225	27	28
200	100	200	230	29	30
200	125	235	240	27	29
200	150	260	245	35	37
200	200	320	280	42	44
250	80	180	265	37	39
250	100	205	270	38	40
250	150	265	280	49	51
250	200	320	290	52	55
250	250	380	300	61	64
300	80	185	295	50	52
300	100	210	300	51	53
300	150	265	310	63	66
300	200	325	320	67	70
300	250	380	330	83	87
300	300	440	340	90	94
350	80	185	325	56	59
350	100	205	330	57	60
350	150	270	340	75	79
350	350	495	380	122	127
400	80	185	355	71	74
400	100	210	360	72	75
400	150	270	370	90	94
400	200	325	380	92	96
400	250	385	390	131	136
400	300	440	400	135	140
400	400	560	420	150	156
450	80	215	390	589	93
450	100	215	390	90	94
450	150	270	400	110	115
450	300	390	430	174	180
450	400	560	450	191	201
450	450	620	460	198	208
500	250	215	420	103	112
500	100	215	420	91	100

Nominal Bore		Dimensions		Weight	
Body	Branch			Epoxy	Lined
Mm	Mm	L mm	H mm	Kgs.	Kgs.
500	150	330	430	128	138
500	200	330	440	131	141
500	300	390	460	185	195
500	400	565	480	110	221
500	500	680	500	258	270
600	80	355	470	167	177
600	100	355	475	167	178
600	150	355	490	170	181
600	200	340	500	172	184
600	300	585	525	238	250
600	400	570	540	268	282
600	450	820	570	269	384
600	500	800	580	350	364
600	600	800	580	388	403
700	150	360	525	276	291
700	200	345	525	291	306
700	400	575	555	383	398
700	450	640	580	406	424
700	700	925	600	561	579
800	150	360	585	507	352
800	200	350	585	357	372
800	400	580	615	463	478
800	450	645	630	491	508
800	800	1045	675	746	766
900	150	370	530	438	454
900	200	355	645	441	456
900	400	590	675	579	500
900	450	650	690	613	633
900	900	1170	750	1008	1028
1000	200	360	705	534	552
1000	400	595	735	679	717
1000	450	665	735	714	724
1000	600	1290	765	921	1114
1000	1000	1290	825	1297	1322
1200	200	360	705	797	817
1200	400	630	845	1010	1031
1200	450	660	845	1055	1078
1200	600	840	885	1214	1237
1200	1200	1300	980	2022	2047
1400	600	1030	980	1860	1883
1400	800	1260	1010	2105	2129
1400	1000	1495	1040	2394	2419
1600	600	1040	1090	2390	2415
1600	800	1275	1120	2693	2718
1600	1000	1505	1150	3026	3054
1600	1200	1740	1180	3293	3420
1600	1400	1850	1050	3762	3792



Flange Socket Piece (Class K12)

Nominal Bore	Dimensions	Weight	
		Epoxy	Lined
mm	L mm	Kgs.	Kgs.
80	130	7	8
100	130	9	10
125	135	11	12
150	135	13	14
200	140	18	20
250	145	26	28
300	150	37	39
350	155	47	49
400	160	63	67
450	165	72	76
500	170	93	97
600	180	135	140
700	190	193	208
800	200	252	260
900	210	327	335
1000	220	415	425
1200	240	658	648
1400	310	912	927
1600	330	1233	1253



Flange Spigot Piece (Class K12)

Nominal Bore mm	Dimensions L mm	Weight	
		Epoxy Kgs.	Lined Kgs.
80	350	8	9
100	360	10	11
125	370	12	13
150	380	16	17
200	400	23	25
250	420	33	35
300	440	45	48
350	450	55	61
400	480	75	82
450	500	90	98
500	520	115	122
600	560	161	173
700	600	218	226
800	600	254	275
900	600	320	344
1000	600	402	412
1200	600	567	599
1400	710	818	884
1600	780	1143	1225

